

# Lotus Notes Brukergruppe: iSeries Domino Multi Version Support Februar 2004



[trond.bjerkvold@no.ibm.com](mailto:trond.bjerkvold@no.ibm.com)

© 2003 IBM Corporation

# Innovative Technology = Leading Server Performance = eServer Family™



## zSeries

z = Near-zero downtime

- ▶ Most reliable, mission-critical data transaction servers
- ▶ Large centralized environment - dynamic workload management
- ▶ Designed for the high performance and high availability requirements of e-business



## iSeries

i = Integrated

- ▶ Most flexible, high-performance, integrated business server
- ▶ Robust application integration and single, integrated operating system
- ▶ Highest level of security available



## pSeries

p = Performance

- ▶ Most powerful, technologically advanced UNIX servers
- ▶ Unlimited scalability
- ▶ Industry leading performances in all benchmarks
- ▶ Fastest, most flexible commercial UNIX system on earth



## xSeries

x = X-architecture

- ▶ Affordable Intel-based servers with mainframe-inspired reliability technologies
- ▶ Freedom of choice in operating environments
- ▶ Designed to handle specific business needs and workloads

## Utfordringer med Domino på intel servere:

- Oppgradering av Windows
- Virus på server
- Oppdatering med service pakker
- Utnyttelse av disk (load balancing)
- Test av Domino oppgradering
- Administrasjon av mange servere
- Replikering mellom servere
-

## Fordeler med å samle Domino servere på iSeries:

- Oppgrader OS/400 ett sted en gang
- OS/400 Anti Virus innebygget
- Oppdatering av programrettelser ett sted
- Utnyttelse av disk (load balancing)
- Test av Domino oppgradering
- Administrasjon av mange servere
- Replikering mellom servere
- Isolering av Domino tasks i egne minneområder
- Enkelt å lage nye Domino servere

## Just imagine

- Running multiple versions of Domino within a common OS/400
- Testing a new MR within your current Domino environment
- Selecting for each of your Domino servers the MR of your choice
- Updating your Domino server "on demand"
- Installing a new release while your Domino servers are up and running
- *Reducing TCO...*

***Wishful thinking ???***

## What is multi-versioning ?

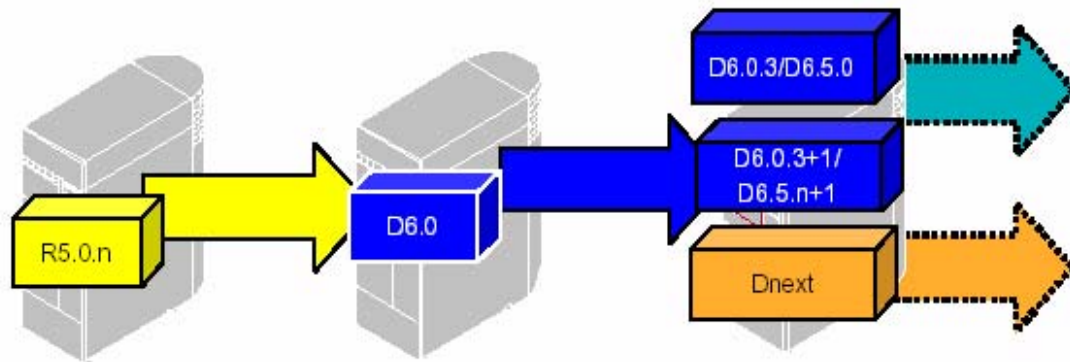
- **Multi-version capable release of Domino for iSeries -**
  - ▶ *A Domino for iSeries release (or MR) that can be independently installed on the same OS/400 partition as another, different, multi-version capable release. Servers on that OS/400 partition can be configured for and use any of the installed multi-version capable releases.*
- **Multi-versioning -**
  - ▶ *Installing more than one multi-version capable release of Domino for iSeries on a single OS/400 partition.*

Domino Servers on iSeries:  
Sharing the processor cycles  
Sharing the memory  
Sharing the disks

**now Sharing the Domino release options**

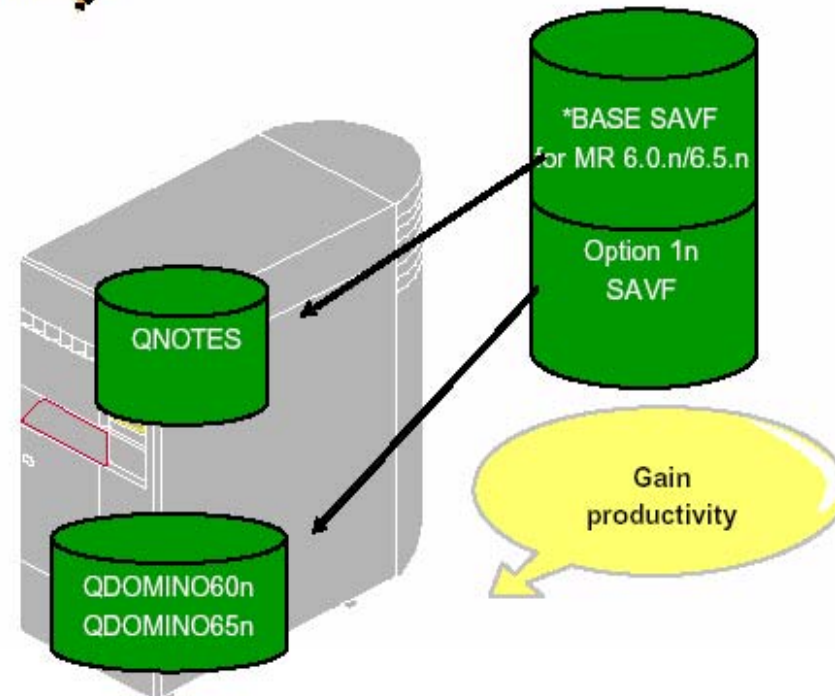
# How does it work

Gain flexibility



Multiple versions running under single OS/400

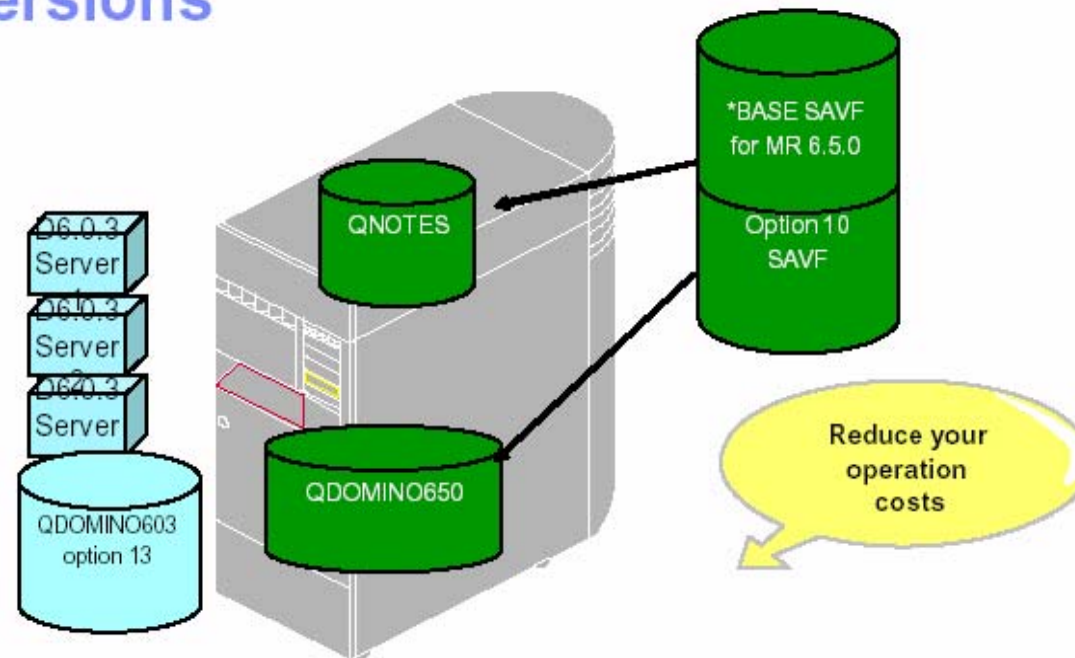
Similar code installation process but Install commands reflect multi-versioning options



Gain productivity

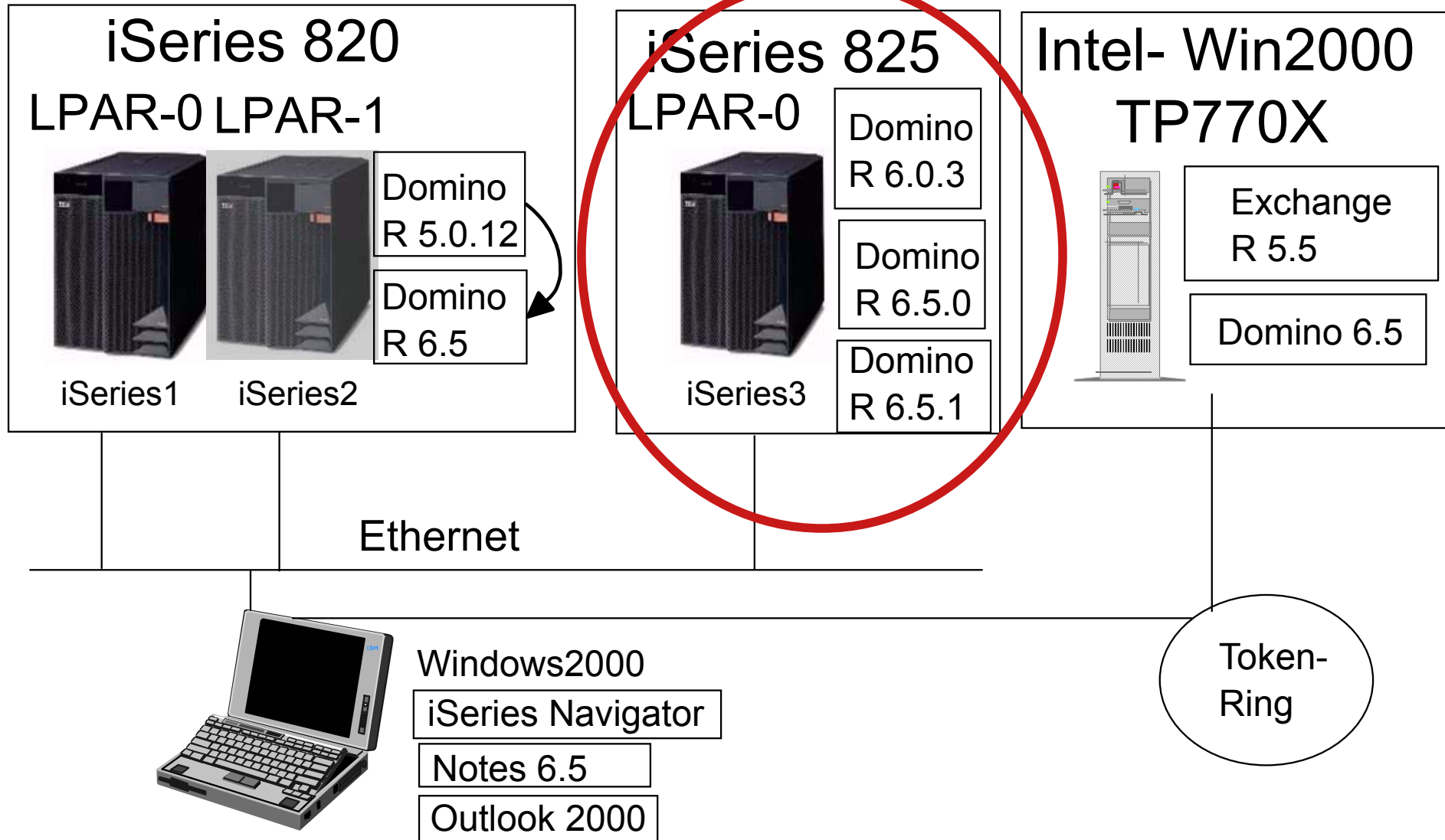
## Installing new versions

*Example:  
Adding Domino 6.5  
to Domino 6.0.3*



- Install "next" version in addition to current one(s)
- No operation disruption if needed
- Assign a specific server to "next" version as YOU require
- Set of specific commands installed to help manage multi-versioning
- Options to automate Domino servers update and previous code removal

# iSeries Demonstration Environment



## Determine IP address:

domino01.osl.no.ibm.com      9.175.68.22

## Create new Domino server on iSeries

The screenshot shows the iSeries Navigator interface. The left pane displays a tree view of connections under 'My Connections'. The 'Servers' folder is expanded, and the 'Domino' icon is circled in red. The right pane shows a table of system components for the selected server.

Name	Description
Basic Operations	Manage messages, printer output, printers, and jobs.
Work Management	Manage active jobs, server jobs, job queues, subsystems, and me
Configuration and Service	Display system inventory, work with fixes, and collect performanc
Network	Manage TCP/IP and Internet support.
Security	Configure and manage security.
Users and Groups	Manage OS/400 users and user groups.
Databases	Administer DB2 UDB for iSeries.
File Systems	Work with file systems.
Backup	Schedule backups of server data.
Application Development	Work with application development tools.
AFP Manager	Manage AFP resources, PSF configurations, and font tables.
OnDemand Archive	OnDemand for iSeries Administrative Functions

# Create new Domino server on iSeries:

**Lotus.** Domino™ 6.5

Server Setup is loading...



**Signon to the Server**

System:

User ID:

Password:

Licensed Materials - Property of IBM. L-GHUS-5DXLBG © Copyright IBM Corporation 1985, 2003. All Rights Reserved. IBM, the IBM logo, Lotus and Domino are trademarks of IBM Corporation in the United States, other countries, or both.

Java and all Java-based trademarks are trademarks of Sun Microsystems, Inc. in the United States, other countries, or both. All other trademarks are trademarks of their respective companies.



Remote Server Setup for iseries3.osl.no.ibm.com



Please review and confirm your chosen server setup options

Lotus software

Please review the following options you have chosen for your Domino server setup:

Setting	Current selection
Remote server name	Domino1/IBM
Server type	Set up the first server or a stand-alone server
Data directory or partiti...	/Domino/Domino65Server/Data
Organization name:	IBM
Domino domain name:	Demo
ACL	Prohibit anonymous access to all data
System Group	LocalDomainAdmins created with "Ma

To make any changes, click "Back".

To setup your server with the above options, click "Setup".

Server Setup

Domino Server Setup

6%

View command

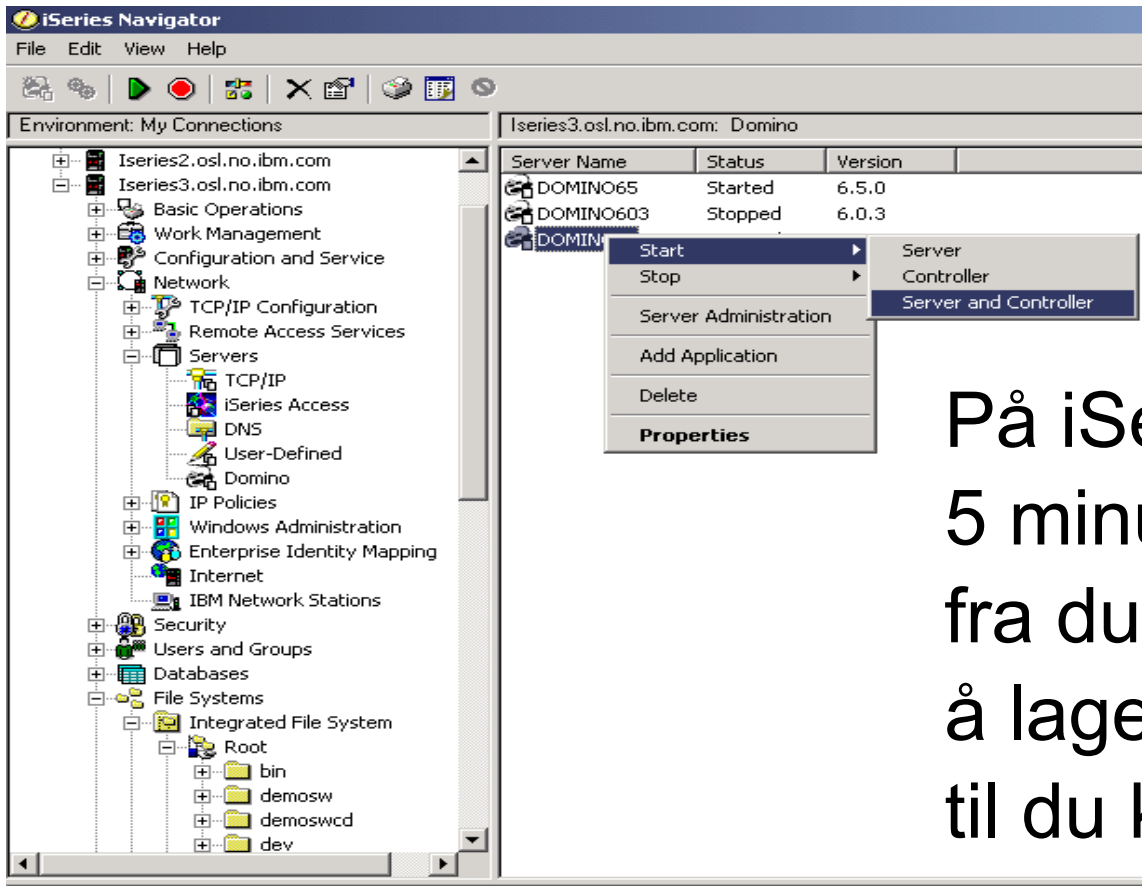
Help

< Back

Setup

Cancel

# Start Domino server




På iSeries tar det omtrent  
5 minutter  
fra du bestemmer deg for  
å lage en ny Domino server  
til du kan starte den !!!!

# Domino Multi version Support on iSeries

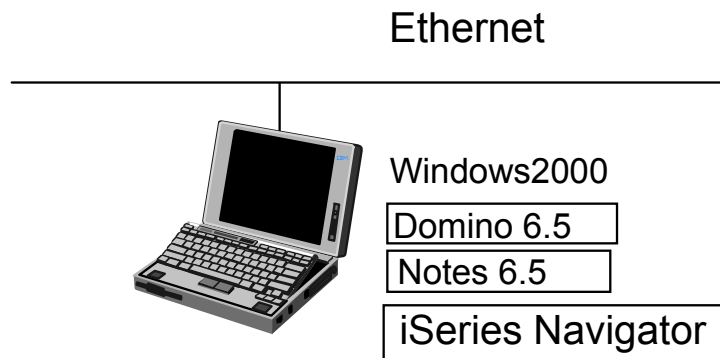
- Domino 6.0.3
- Domino 6.5.0
- Domino 6.5.1

Alle i samme OS/400 partisjon !

iSeries 825 LPAR-0  iSeries3	Domino R 6.0.3	<b>QDOMINO603</b>
	Domino R 6.5.0	<b>QDOMINO650</b>
	Domino R 6.5.1	<b>QNOTES (default) QDOMINO651</b>

## Installeres til (eksempel):

- \Domino\Domserv603A
- \Domino\Domserv650A
- \Domino\Domserv651A
- \Domino\Domserv651B
- \Domino\Domserv651B



## Domino Multi Versjon Support on iSeries (example)

iSeries OS/400	Host (IP)	IP Address	Domino-Release	Installed to:
825-P0-OS400	iseries3	9.175.68.14	6.0.3	\DOMINO\Domino603A\Data
825-P0-OS400	iseries4	9.175.68.15	6.0.3	\DOMINO\Domino603B\Data
825-P0-OS400	server1	9.175.68.18	6.5.0	\DOMINO\Domino650A\Data
825-P0-OS400	server2	9.175.68.19	6.5.0	\DOMINO\Domino650B\Data
825-P0-OS400	server3	9.175.68.20	6.5.1	\DOMINO\Domino651A\Data
825-P0-OS400	web01	9.175.68.21	6.5.1	\DOMINO\Domino651B\Data
825-P0-OS400	domino1	9.175.68.22	6.5.1	\DOMINO\Domino651C\Data

## About Sametime 3.1 for iSeries

- Already includes all of the updates distributed in 3.1 Interim Fix 1 for Windows platforms.
- Supports direct upgrade from any of following Sametime for iSeries releases: 2.5, 3.0 or 3.0a.
- Supports both Domino 6 (6.0.2 and later releases, or 6.5) and Domino R5 (5.0.12 or later).

iSeries is only platform to support

- Domino R5 with Sametime 3.1
- Sametime and QuickPlace on same system

## iSeries Domino fakta:

Operativsystemet OS/400 på iSeries et anti-virus bygget

Hver OS/400 partisjon kan kjøre 99 samtidige Domino servere,  
og en iSeries server kan kjøre opp til 32 OS/400 partisjoner

iSeries Domino internetside

<http://www-1.ibm.com/servers/eserver/series/domino/>

iSeries Domino Buying/Selling Guide

<http://www.redbooks.ibm.com/redpieces/pdfs/redp3845.pdf>

## Additional resources

Multi-versioning whitepaper:

<http://www-1.ibm.com/servers/enable/site/domino/downloads/multiversion.pdf>

Redbook SG24-6940 (1Q04) :

"Lotus Domino 6 Multi-Versioning Support on the IBM eServer iSeries"

<http://www.redbooks.ibm.com/redpieces/pdfs/sg246940.pdf>

**For å få vite mer om Domino på iSeries, ta kontakt med:**

**Trond Bjerkvold  
IBM**

**e-mail: [trond.bjerkvold@no.ibm.com](mailto:trond.bjerkvold@no.ibm.com)**

**mobil: 928 95 322**

**kontor: 66 99 86 70**